



:Anapurna M2500i roll-to-roll

# :Anapurna M2500i

High-speed hybrid UV-curable inkjet system with a printing width of 2.5m for indoor and outdoor applications.

**AGFA** 

STAY AHEAD. WITH AGFA GRAPHICS.

# Anapurna M2500i

Stand out and let Anapurna M2500i differentiate your decoration and communication jobs.

The 6-color Anapurna M2500i hybrid wide-format printer is a perfect fit for sign shops, digital printers, photo labs and mid-size graphic screen printers printing outdoor and indoor top quality wide-format jobs, on a wide range of rigid and roll-to-roll media. With the new design also come improved print quality and speed. A more accurate dot positioning, an enhanced curing system and higher performing print heads make the Anapurna M2500i into a heavy-duty, turnkey and complete UV inkjet system. The white ink function creates new possibilities for printing on transparent material for backlit applications or for printing white as a spot color. With the automatic board feeder, productivity is increased even more.



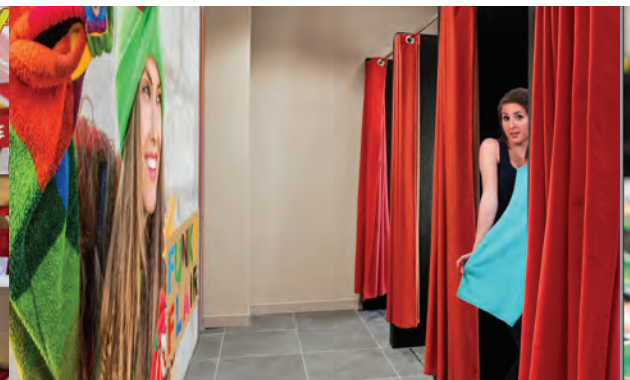
Store communications - self adhesive vinyl



In-store communications - backlit



In-store communications - forex



In-store communications - bache

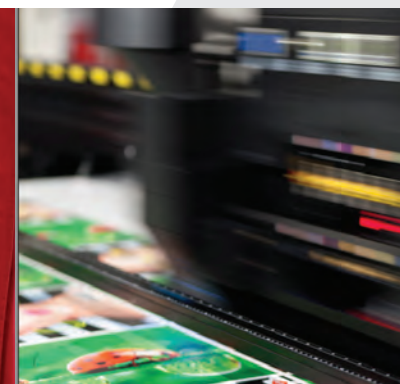
### **2.5m width for a wider range of applications**

The Anapurna M2500i adds more versatility to your business as its width of 2.5m expands your range of applications. It produces top quality prints on uncoated rigid media, such as corrugated boards, rigid plastics, exhibition panels, stage graphics and advertising panels, as well as roll media such as film, vinyl and paper, canvas and banners of up to 4.5 cm thick. It can also be used to print niche products such as wood, dvd's or personalized objects.

### **Reliable workhorse**

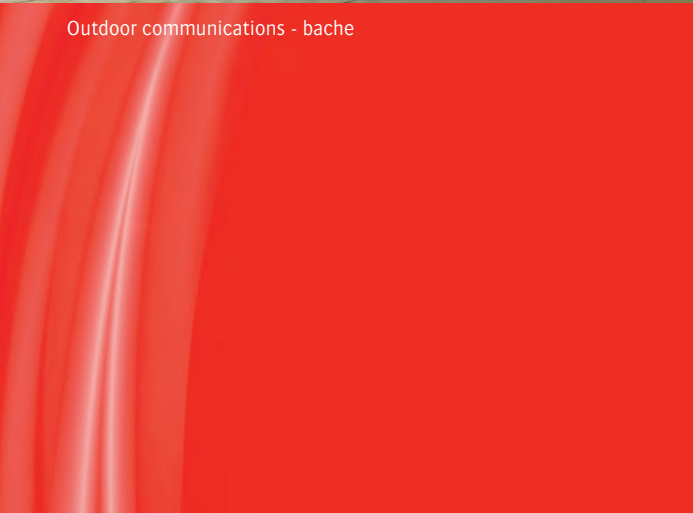
Featuring a robust and industrial engineered concept, fit for sustained higher workloads, and incorporating the latest generation of fast-firing print heads (the Konica Minolta KM1024i), the Anapurna M2500i offers a high throughput while also achieving a high level of print quality. Measured at optimum print shuttle speed, the system produces up to 35 m<sup>2</sup>/h in six colors production quality\*. At that speed you will be able to maintain a high print production on all your substrates, satisfying your most demanding customers. Multiple boards or borderless printing increases productivity even more.

*\*See the back cover for an overview of the speeds in the different printing modes/quality levels.*

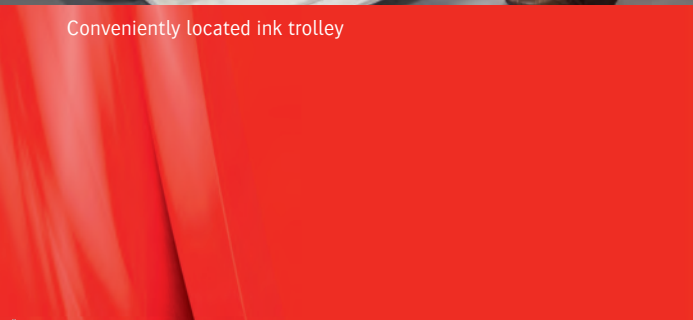




Outdoor communications - bache



Conveniently located ink trolley



**Top quality on a wide range of roll and rigid media**

Thanks to a re-engineered belt drive and shuttle beam, the Anapurna M2500i brings a highly accurate dot positioning and thus excellent image quality, which is further enhanced by the 3-pass mode with gradient functionality. The eight 12 picolitre KM1024i heads guarantee printing of good solids, fine text reproduction of up to 4 pt, good tonal rendering and low ink consumption.

**Best-in-class Agfa-made inks in the mix**

Anapurna UV-curable inks deliver fast drying, a wide color gamut, high color vibrancy and versatile material compatibility for the most demanding wide-format indoor and outdoor applications. Offering very good adhesion on difficult substrates, these inks – both white and color – bring high image longevity and outdoor resistance, making them the best choice for a wide range of applications. As they allow instant curing, prints are ready to handle immediately.

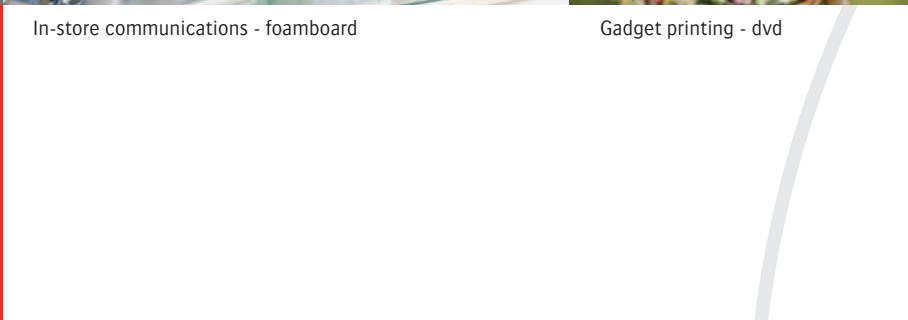
On top of that, thanks to their high-pigment load, the ink consumption per square meter is low. This so-called ‘thin ink layer’ technology saves costs and results in nicer looking prints.



In-store communications - foamboard



Gadget printing - dvd



**Rely on white**

The Anapurna M2500i is ready to work with Agfa Graphics' fourth generation white inks, which are highly opaque. This means you obtain a qualitative white output with low ink consumption on colored or dark substrates as well as on transparent material for backlit or backlit/frontlit applications. Alternatively, you can use white simply as a spot color. Also, the Anapurna M2500i has the possibility to run pre- or post-white concurrently in one production run, greatly expanding application possibilities.

**Powered by Asanti workflow**

Just like all wide-format printers from Agfa Graphics, the Anapurna M2500i is part of an integrated solution, including Agfa Graphics' Asanti wide-format workflow software, which streamlines production processes, increases productivity and maintains consistency across the board. Asanti removes the hit-and-miss elements of print production so that you can integrate all of your pre-press elements and the result is a fully accountable end-to-end quality management solution. Say goodbye to errors and costly remakes.



Asanti workflow software

## Designed for the greatest possible deployment and convenience



In-store communications - paper

### Flawless media handling

Media loading is very straightforward with automated features such as the media registration bar and head height adjustment. The Anapurna M2500i's automatic vacuum system delivers an equal vacuum during the printing process, whether printing roll or rigid materials. This ensures flawless media transport, giving accurate print results at all times. The ring-blower driving the vacuum system is built in in the printer, reducing the noise to a minimum for even more user convenience. In addition, the Anapurna M2500i incorporates a set of shuttle safety sensors to prevent print heads from touching and damaging the substrate.

Last but not least, the ionization bars see to it that there are no electro-static loads on the substrate, ensuring optimum ink droplet control and thus the highest print quality.

### Multiple board or borderless printing

Multiple board printing is possible to maximize your productivity even more. The borderless printing feature makes post-finishing superfluous.



Indoor communications - polyester



Store communications - self adhesive vinyl



POP printing - wood & bache

**Automatic board feeder**

The printer can have an automatic board feeder added in order to increase productivity substantially. This optional automated board feeding table provides an automated solution for volume printing of small board sizes (up to five boards can be printed in parallel).

**Ink monitoring**

During production the ink levels are monitored by the automatic ink refill system. The ink (re)filling system can be accessed easily, enabling a spotless refill of your ink containers.

The white ink is managed by a fully separate system (circulation, under-pressure regulation and cleaning circuit). The tank containing it is equipped with a stirring mechanism to keep the ink properly mixed at all times.

**Convenient operator interface**

All settings are conveniently arranged in a powerful straightforward graphic user interface on a swivel-arm mounted touch screen. Printed files are being spooled, viewed and stored by an internal bitmap server with a HD of 1 TB for ripped images for fast spooling and secure transfer of big amounts of data.



## •Anapurna M2500i

### POSITIONING

- Perfect fit for digital printers, photo shops and mid-size graphic screen printers
- Heavy-duty, turnkey and complete industrial UV inkjet system
- Productivity: quality level dependent:
  - Express mode: up to 115m<sup>2</sup>/h
  - Production mode: up to 35m<sup>2</sup>/h
  - Standard quality mode: up to 28m<sup>2</sup>/h
  - High quality mode: up to 20m<sup>2</sup>/h
  - High definition: up to 16m<sup>2</sup>/h
- Excellent solids and signs in 8-pass printing
- Multiple (= parallel) board printing
- Borderless printing

### DESIGN CONCEPT

- Robust engineering - professional hybrid UV wide-format printer
- Includes all necessary components like the vacuum ring-blower, shuttle safety sensors, media transport and roll-up systems for guaranteed peak production

### APPLICATIONS

- Banners, posters, exhibition graphics, POP, mock-ups, backlit, frontlit, self-adhesives (labels)
- Niche application: DVD printing, wood, art reproductions, personalized object printing
- Party gadgets (beer coasters...)
- Architectural and interior decoration, ceramics printing

### ENGINE FEATURES

- Reinforced beam
- Automated media positioning bar mounted on table for the registration of rigids
- Divided vacuum table, 4 zones
- 1.5 kW ring-blower for strong vacuum situated in the engine for less noise
- Accurate media transport/feed
- Powerful fast-scan motor
- Automatic control of vacuum strength (inverter based)
- Ionization bar mounted on each side of carriage to remove electrostatic load on media
- Shuttle safety sensors on each side of the carriage
- Extended basic frame, to support ring-blower
- Black colored re-enforced media transport belt
- Network and USB3 (2) connection
- On-board controller with touch screen

### TEXT QUALITY

- Positive: 4 point
- Negative: 6 point

### SYSTEM INTEGRATION RIP

- Integrated production solution with Asanti, other RIPs on request
- Ready to use Anapurna M2050i media/ink profiles available (Asanti)



### MEDIA/SUBSTRATE FLEXIBILITY

#### Minimum printable substrate size

- Rigid /sheet media (printing single board): A2 landscape (60 x 42cm / 1.97 x 1.4ft)
- Flexible roll media: 60cm wide (1.97ft)

#### Flexible media

(roll-to-roll, roll-to-sheet and sheet printing)

All printable flexible media, except 'mesh' without liner

Maximum width:

- Media size: 250cm (8.2 ft)
- Printable size: 250cm (8.2ft) / 247cm (8.1 ft) with borderless printing
- Minimum thickness: 0.2mm

Media roll specifications:

- Max roll weight: 50kg
- Max roll diameter: 36cm (14.17")
- Support for 3" core

#### Rigid Substrate

Maximum width

- Media size: 250cm (8.2 ft)
- Printable size: 250cm (8.2 ft) / 247cm (8.1 ft) with borderless printing

Maximum length

- Supported by 1 rigid roller table: 140cm (4.59ft)
- Supported by 1 rigid roller table + media extension table (default): 320cm (10.5ft)

Thickness

- Minimum thickness: 1mm
- Maximum thickness: 45mm (1.77")
- Maximum weight: 10kg/m<sup>2</sup> on printing table
- Multiple board loading possible when using "registration blocks"

### INKS

7 Anapurna M G2 UV-curable inks (CMYKCLm and white)

### HEADS

- 6 Konica-Minolta KM1024i-heads: 1024 nozzles/head with a droplet volume of 12pl (colors)
- 2 Konica-Minolta KM1024i-heads: 30pl (white in line)

### ENGINE DIMENSIONS

475 (W) x 169 (H) x 173 (D) cm

### WEIGHT

2200 kg

### ELECTRICITY

- 380 V 3-phase star connection with Neutral wire (3x 32A') 50/60Hz
- 230V 3-phase delta connection without Neutral wire (3x 30A') 50/60 Hz